



**Department of
Mental Health &
Addiction Services**

HEALTH EQUITY IN PUBLIC SERVICE A COLLABORATIVE OPPORTUNITY



Ohio University Voinovich School

Public Service Perspectives

October 25, 2023

Dawn M. Thomas, Ph.D., OCPC

TODAY'S OBJECTIVES

- ✓ Define health equity terminology and intersectionality of terms.
- ✓ Provide an overview of the Social Determinants of Health (SDoH) and impact on population level health
- ✓ Explore the value of cross-sector collaboration for improved health outcomes.

HEALTH DISPARITIES

Differences in the presence of Disease, Health Outcomes

Differences in Access to Health Care and many other Variables

Differences are Unnecessary Avoidable issues due to Social and Economic Status

HEALTH DISPARITIES

Preventable Differences in the presence of disease, health outcomes, or access to health care between population groups

These differences are often referred to as a “**Disparity**”, “**Inequity**”, or “**Inequality**”

Prevention is the Key!

HEALTH DISPARITIES

- Health differences closely linked with social, economic, and/or environmental disadvantage
- Health Disparities adversely affect groups of people who have systematically experienced greater obstacles to health

HEALTH DISPARITIES

Racial or Ethnic group/Immigration Status

Religion; Socioeconomic/Class Status

Gender; Age

Mental Health; Cognitive, Sensory

Physical Disability

Sexual Orientation or Gender Identity

Geographic Location

Characteristics historically linked to discrimination or exclusion



HEALTH EQUITY

- Everyone has the **OPPORTUNITY** to obtain their full health potential
- **No one** is disadvantaged from achieving this potential because of their social position or other socially determined circumstance

Centers for Disease Control and Prevention [CDC], 2023)

<https://www.cdc.gov/healthequity/index.html>

TAKING A CLOSER LOOK....

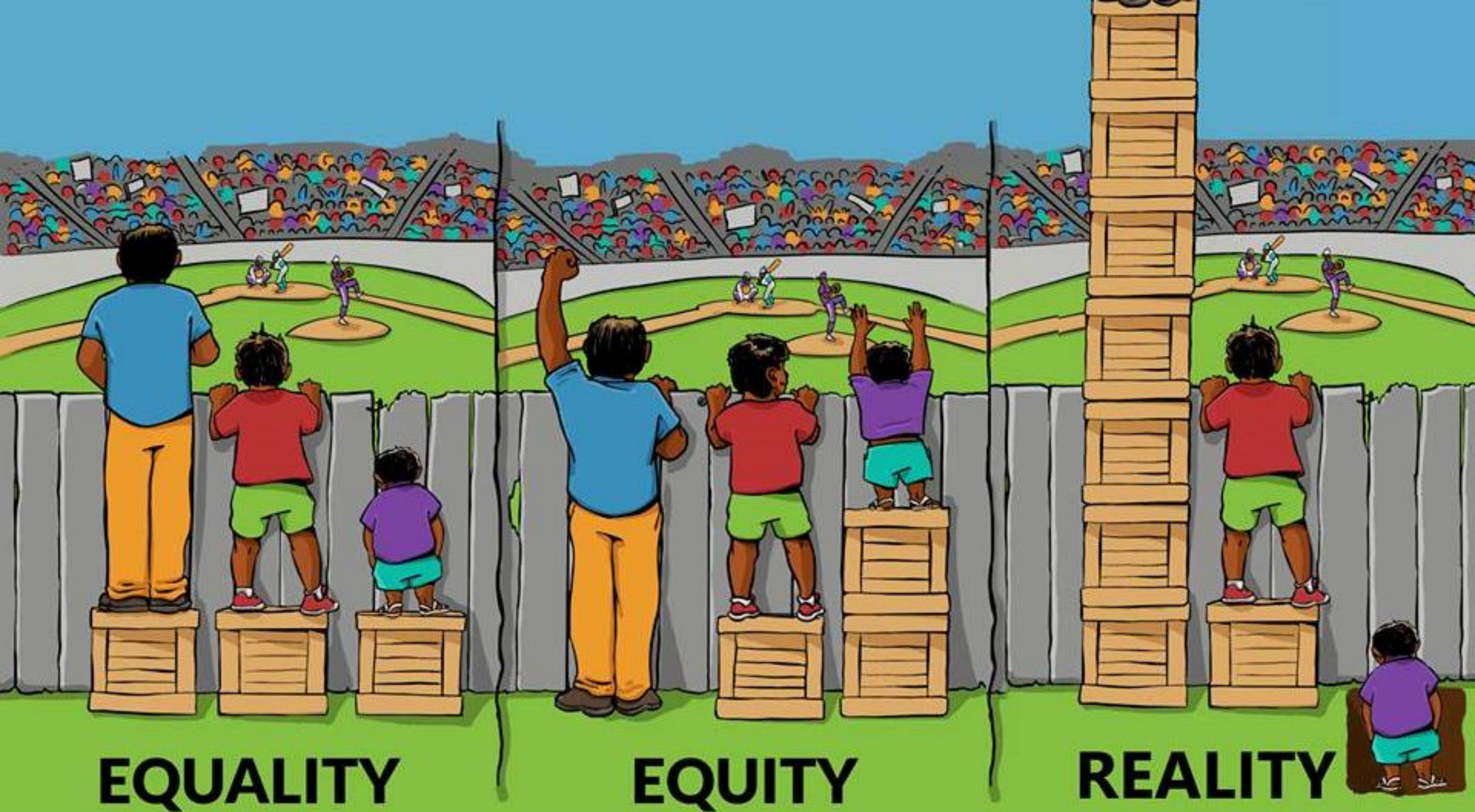
EQUALITY

- Giving everyone the same thing
- It only works if everyone starts from the same place

EQUITY

- Access to the same opportunities
- We must first have equity before we can enjoy equality





EQUALITY

EQUITY

REALITY

HEALTH EQUITY

- Achieving the highest level of health for all people
- Focused societal efforts to address inequalities by equalizing the conditions for health for all groups
- Especially for those who have experienced socioeconomic disadvantage or historical injustices.

<https://www.cdc.gov/healthequity/index.html>

Equality



Equity



Equality



The assumption is that **everyone benefits from the same supports**. This is equal treatment.

Equity



Everyone gets the supports they need (this is the concept of "affirmative action"), thus producing equity.

Justice



All 3 can see the game without supports or accommodations because **the cause(s) of the inequity was addressed**. The systemic barrier has been removed.

Social Determinants of Health



IMPACT OF SOCIAL DETERMINANTS OF HEALTH

Social determinants of health have tremendous affect on an individual's health regardless of age, race, or ethnicity.

Economic Stability:

- » Employment
- » Income
- » Expenses
- » Debt
- » Medical Bills
- » Support

Neighborhood & Physical Environment:

- » Housing
- » Transportation
- » Safety
- » Parks
- » Playgrounds
- » Walkability

Education:

- » Literacy
- » Language
- » Higher Education
- » Vocational Training
- » Early Childhood Education

Food:

- » Hunger
- » Access to Healthy Options

Community & Social Context:

- » Social Integration
- » Community Engagement
- » Support Systems
- » Discrimination

Health Care Systems:

- » Health Coverage
- » Provider Availability
- » Provider Linguistic & Cultural Competency
- » Quality of Care

Health Outcomes:

- » Mortality
- » Life Expectancy
- » Health Care Expenditures
- » Health Status
- » Functional Limitations



Advancing Health in America

THE LAYERS OF INEQUITY



- Being in a disadvantaged group is associated with having a lower level of educational attainment
- Having a lower level of educational attainment is associated with worse health status
- Typically, the lower a group's social position, the worse the average health status of its members

MONEY



POWER

RESOURCES



SOCIAL DETERMINANTS OF HEALTH (SDOH)

Experiences of **DISCRIMINATION** or **HISTORICAL TRAUMA** are also important social determinants of health for certain populations such as African Americans and Indigenous Peoples



Social determinants of health

RACE, PLACE, HEALTH...

- Blatant discriminatory policies of our nation's past have made it impossible for certain populations/groups of Americans to obtain optimal health
- Racial bias affects health
- Role of racism, discrimination, and bias have perpetuated generational cycles of poor health and risky behaviors



TRUTH IS... RACE MATTERS

We must confront and acknowledge history to eliminate health disparities and address health equity

Blatant discriminatory policies of our nation's past have made it impossible for certain populations/groups of Americans to obtain optimal health

Legacy of our history DID NOT DISAPPEAR with signing of laws

Role of racism, discrimination, and bias have perpetuated generational cycles of poor health and risky behaviors



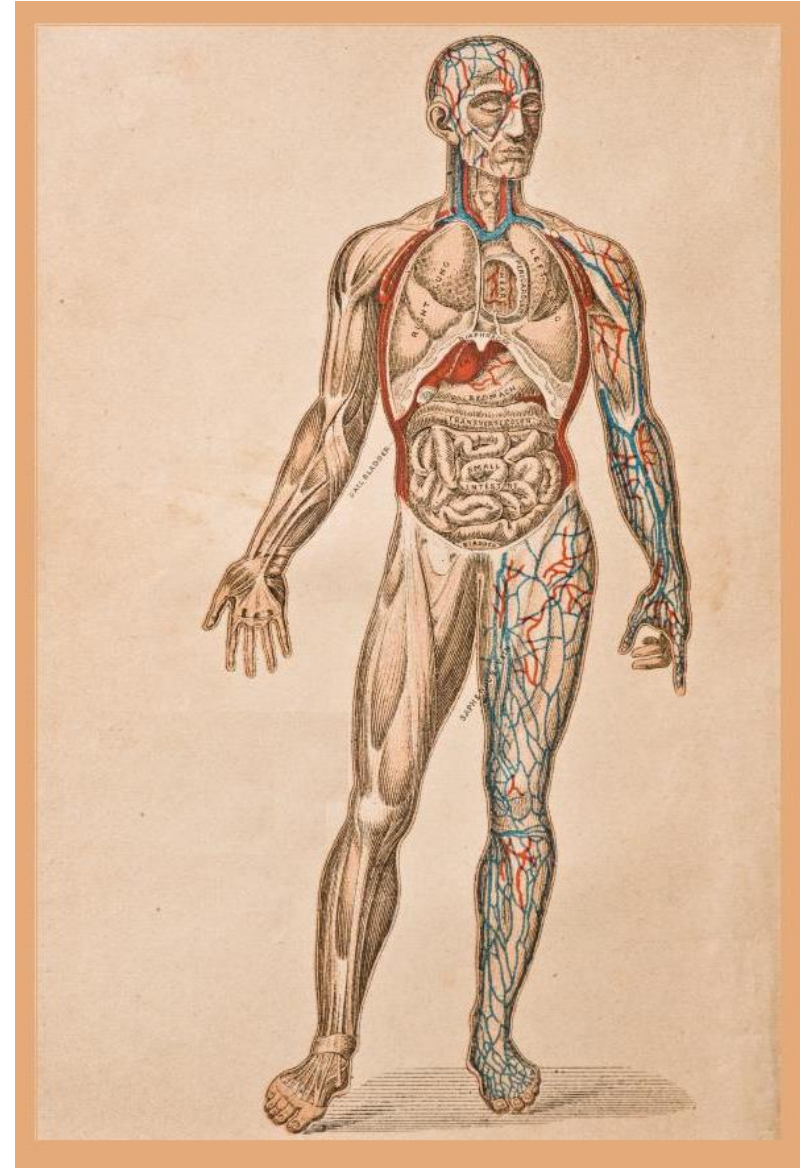
SOCIAL DETERMINANTS OF HEALTH (SDOH)

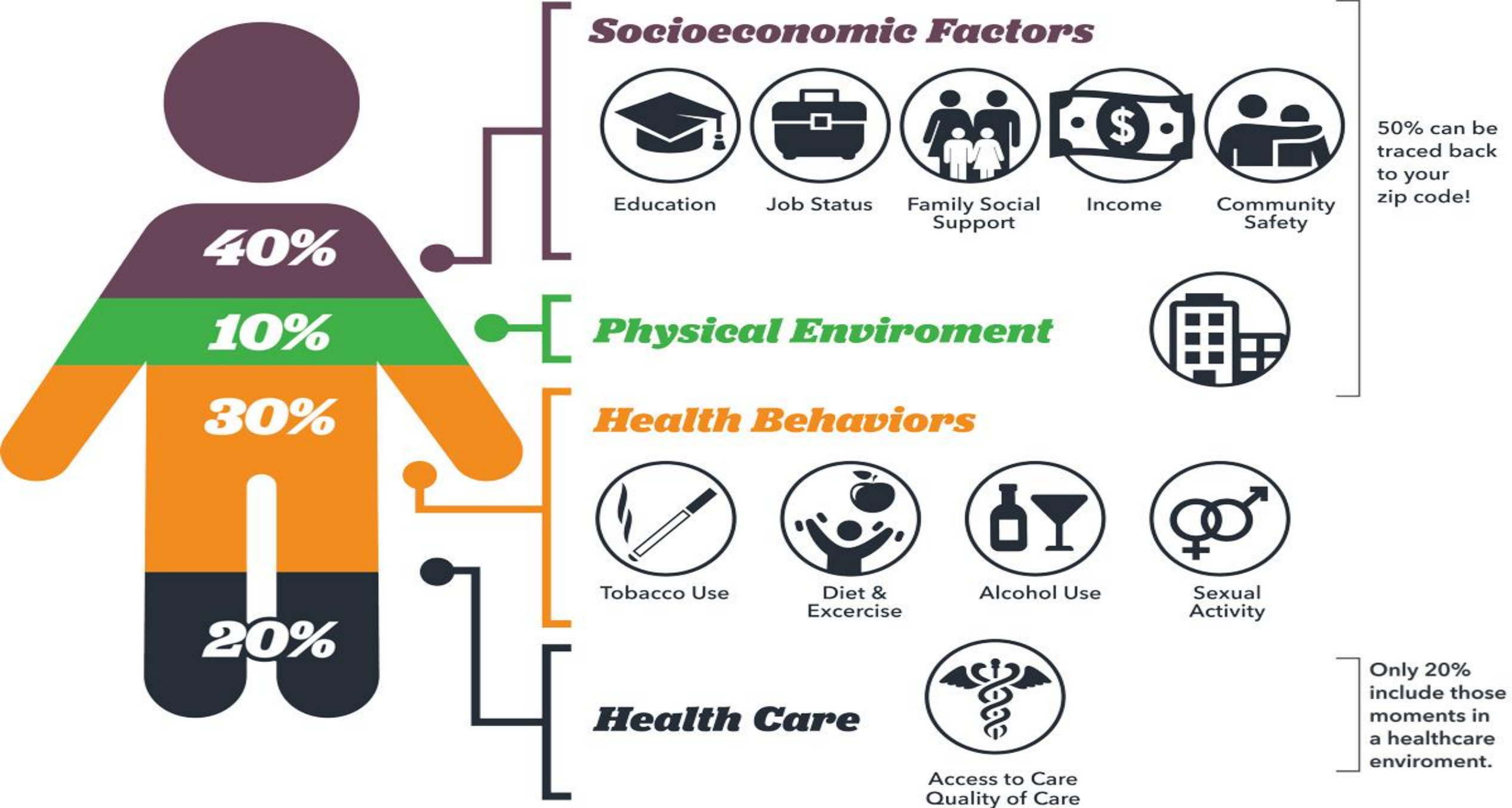
- These conditions determine a person's chances of maintaining good health and/or poor health
- Sometimes referred to “**the causes of the causes**” or “**root causes**”
- How social and economic structures shape the health of populations



KEEP THIS IN MIND...

- View an individual as more than just a system of organs/physical body
- Health is more a function of lifestyles linked to living and working conditions than of **HEALTHCARE**
- Health does not occur in a vacuum





Socioeconomic Factors



Education



Job Status



Family Social Support



Income



Community Safety

50% can be traced back to your zip code!

Physical Environment



Health Behaviors



Tobacco Use



Diet & Exercise



Alcohol Use



Sexual Activity

Only 20% include those moments in a healthcare environment.

Health Care



Access to Care
Quality of Care

SOCIAL DETERMINANTS OF HEALTH (SDOH)

- Complex, integrated, and overlapping social structures and economic systems
- Linked to lack of opportunity and lack of resources



SOCIAL DETERMINANTS OF HEALTH MATTER

Helps us understand why some groups of people are healthier than others

Improve individual and community health

Advance health equity

EVERYONE deserves an **equal opportunity** to make the choices that lead to good health

SOCIAL JUSTICE

ACHIEVING HEALTH EQUITY



- Addressing social determinants of health is a primary approach to achieving health equity
- Focus on the most commonly occurring problems (data driven)

WHERE DO WE GO FROM HERE?

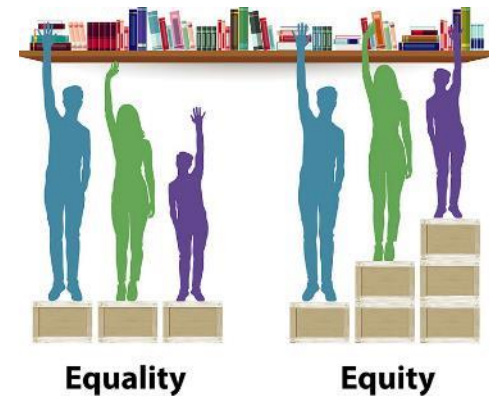
- ✓ Racial bias impacts health
 - ✓ Engage in racial equity learning and conversations
- ✓ Dismantle current systems of inequity
 - ✓ Root causes of inequities not just manifestation
- ✓ Get out into the communities we serve
 - ✓ Engage with stakeholders/partners



WHERE DO WE GO FROM HERE?

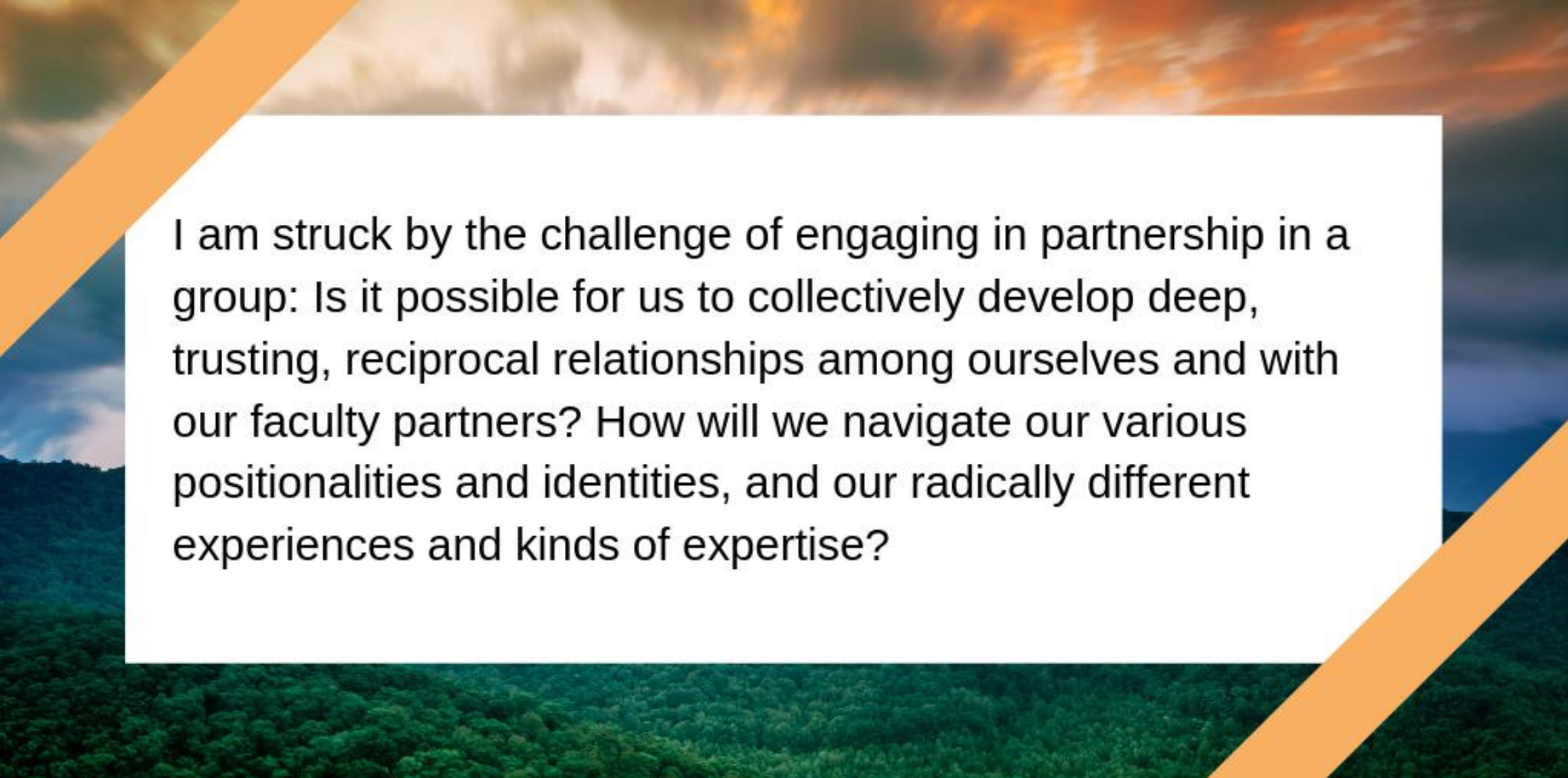


- ✓ Every social policy should consider the impact of health
- ✓ Understand how environmental policies impact health
- ✓ Understand how legislative/judicial policies impact health
 - ✓ Utilize law as a public health tool (statutes, regulations)





[HTTP://VITALYSTHEALTH.ORG/THE-WHEEL/](http://vitalysthealth.org/the-wheel/)



I am struck by the challenge of engaging in partnership in a group: Is it possible for us to collectively develop deep, trusting, reciprocal relationships among ourselves and with our faculty partners? How will we navigate our various positionalities and identities, and our radically different experiences and kinds of expertise?

Sophia Abbott



COLLABORATIVE
OPPORTUNITY

↓

COLLECTIVE RESPONSIBILITY

↓

UJIMA



RESOURCES

- <https://www.cdc.gov/nchhstp/healthdisparities/>
- <https://www.cdc.gov/socialdeterminants/index.htm>
- https://www.who.int/social_determinants/en/
- <https://health.gov/healthypeople/priority-areas/social-determinants-health>
- <https://healthybr.com/community-health/what-are-the-social-determinants-of-health>
- <https://www.countyhealthrankings.org/explore-health-rankings/county-health-rankings-measures>
- <https://www.equityliteracy.org/>
- <https://www.cdc.gov/nccdphp/dch/programs/healthycommunitiesprogram/tools/pdf/sdoh-workbook.pdf>

Ohio Prevention Conference: Social Determinants of Health

November 16, 2023 – The Hilton Columbus/Polaris

<https://osucosw.catalog.instructure.com/courses/2023-opc-general-reg>

CONTACT INFORMATION

Dawn M. Thomas, Ph.D., OCPC

Prevention Systems Manager | Office of Prevention & Wellness

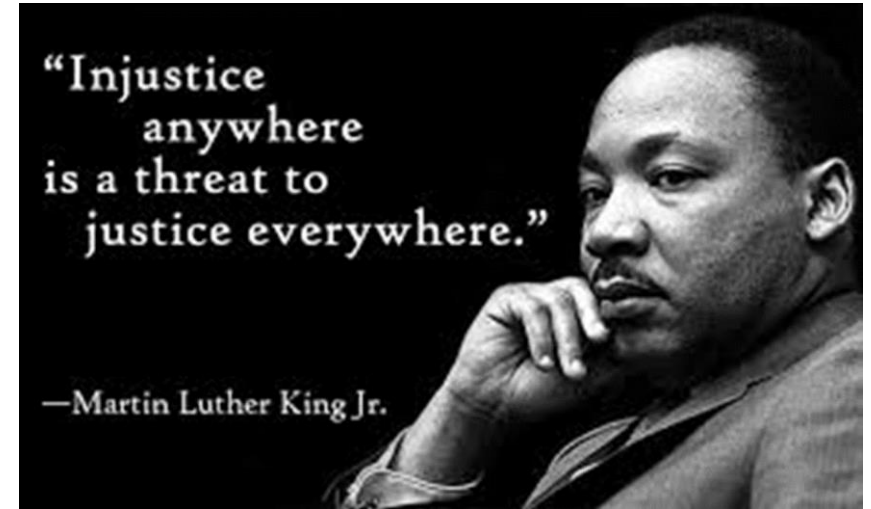
30 E. Broad St., 8th Floor, Columbus, Ohio 43215

Office: 614.644.8327

Mobile: 614.390.3203

dawn.thomas@mha.ohio.gov

mha.ohio.gov



THANK YOU!